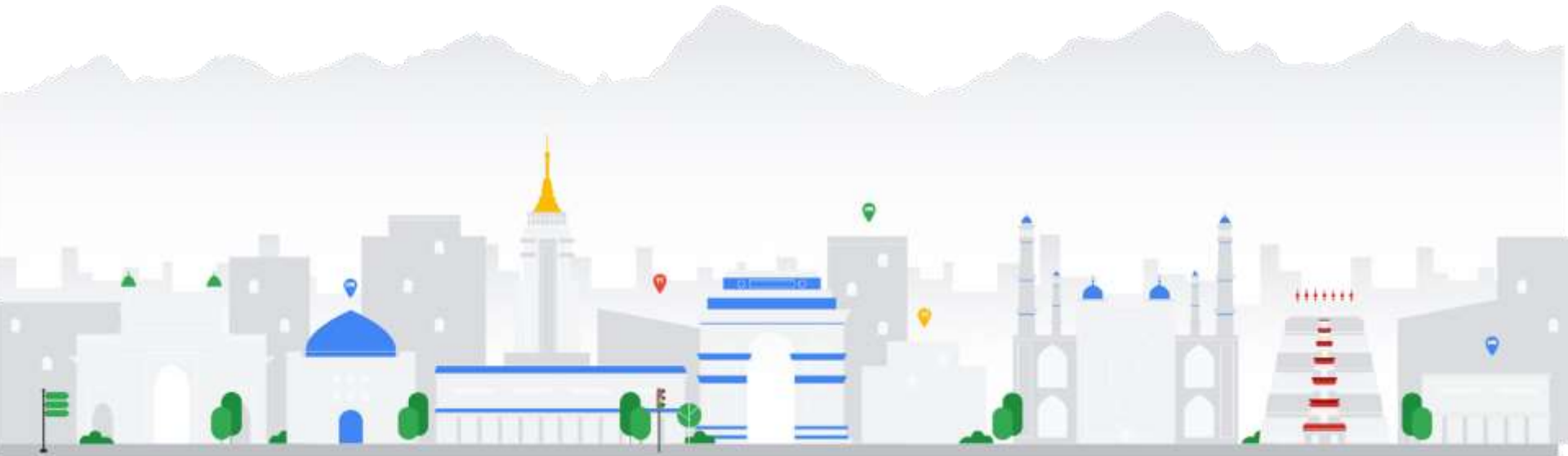


Google



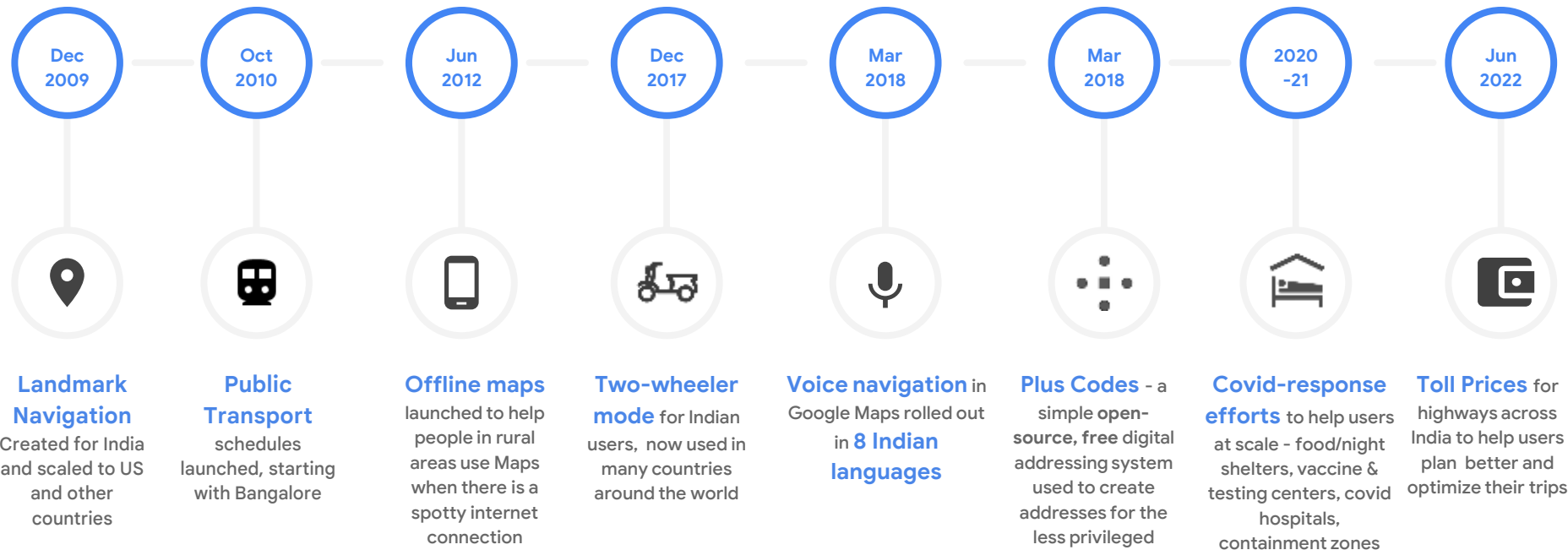
**Roli Agarwal**  
Head of Product Partnerships  
Google Maps



## Helping Indian users with location/geospatial data



# Helping Indian users with location/geospatial data





**+30M**

small and medium businesses  
have a digital presence on  
Maps





**+700M**

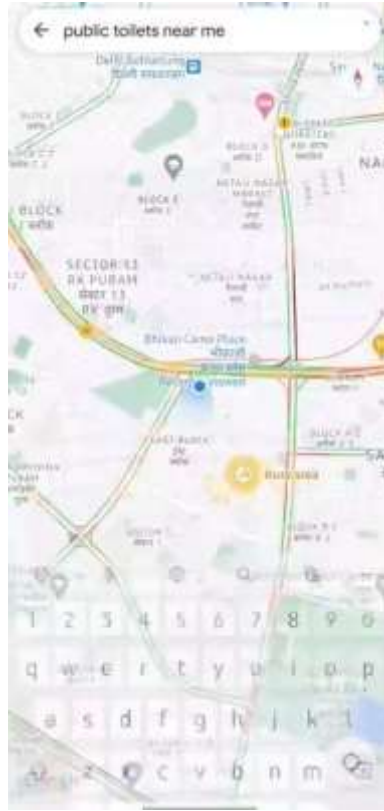
direct connections  
between  
merchants and consumers  
every month



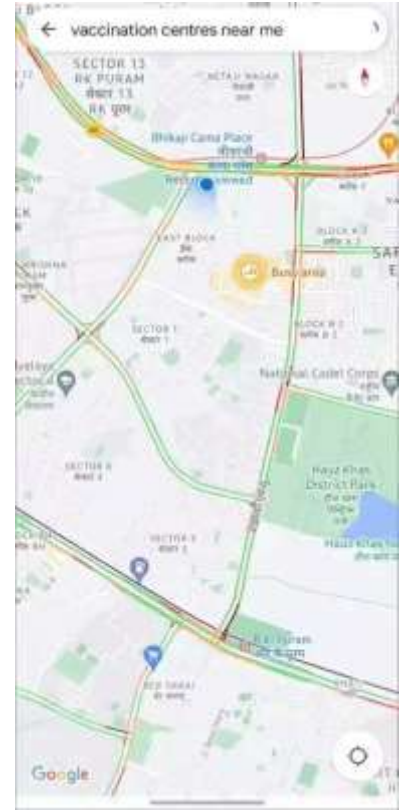
Google Maps Platform



60K+  
public toilets



70K+  
Covid vaccination  
& testing centers







Enabling a more  
reliable, accurate, and  
visual Maps  
experience for our  
users



Solving local  
challenges  
for  
communities  
at scale



Facilitate a more  
sustainable  
environment for  
future  
generations



# Partnering with authorities to address Traffic Congestion, and Road safety

## Partnerships with 8 cities on road closures and incidents



- Delhi
- Kolkata
- Hyderabad
- Cyberabad
- Bengaluru



*"This method of relaying advisories in real-time will help us in better service delivery and public facilitation as a good percentage of people plan their travel with the help of Google Maps So if they are warned about the no go areas, it makes the job easy for us."*

- Dependra Pathak, Special commissioner of police (Traffic) - Delhi

As per the data provided by Google, the traffic lights plan change has resulted in an average 20% wait time reduction per driver going through the pilot intersection in the day. Imagine the positive impact this can have on reducing traffic congestion, road rage, fuel consumption and greenhouse gas emissions when we scale this up across traffic lights in Bengaluru and impact more than 1 crore (10 million) vehicles. The coming together of government and technology companies like Google can truly transform societies and we look forward to continuing to partner with Google to bring further innovations to Bengaluru, India and the world at large." - Dr BR Ravikanthe Gowda, Joint Commissioner of Police (Traffic), Bengaluru



Reduce  
Wait Time



Reduce  
Road Congestion



Reduce  
Carbon Emission



Reduce  
Wait Time



Reduce  
Road Congestion



Reduce  
Carbon Emission

**20%** reduction in wait time per driver

**400 Hrs** per day at a single intersection

**300 Ton** estimated reduction of GHG a year

# Partnering with Transport Ministries to make it easy to find and use Public Transit



*With today's partnership with Google Maps, Delhi joins the league of global cities that seamlessly provides real time information of public transport so that people are able to plan their journeys to the minute. I hope this collaboration will encourage several other transit apps to tap into the open data portal of the Transport department and create innovative solutions to make Delhi's public transport system the default choice for everyone,"*

**– Delhi Transport Minister Shri Kailash Gahlot**

## Intelligent transit management system

- ❖ Real-time data in GTFS and bus tracking on Maps
- ❖ Transport analytics to drive efficiencies

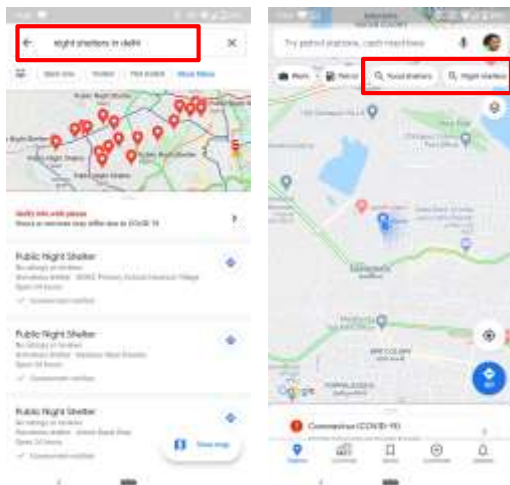


## Partnering with Transport Ministries to make it easy to find and use Public Transit

- **23 cities with static transit schedules for all major transport modes and 4 cities already live with real time information**
- **National coverage for all intercity train schedules with real time location**
- **14 cities with auto-rickshaw fares data**
- **16 cities with real time road closures and incidents data**

# Google Maps played a key role in COVID-19 response efforts

## Food & Night shelters



~12K shelters, 700+ cities, 9 languages

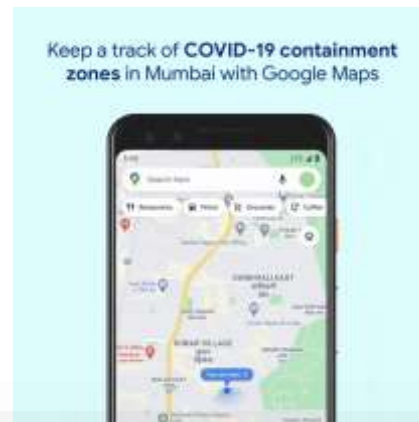
## Community Mobility Maps



*District-level reports* providing insights into *changes in mobility* across different verticals - Retail, Grocery, Parks, Workplaces, etc.

*These reports have helped authorities take Covid-19 response policy decisions and measure their effectiveness at a macro-level*

## Mumbai Containment Zones



*"We once again thank you and your team for associating with us in our response to the COVID situation. We recognise the efforts of all those who brought their expertise, worked really hard, even took risks and extended themselves to help us with surfacing 600+ containment zones on Maps"*

*- Brihanmumbai Municipal Corporation (BMC)*



Ravi Shankar Prasad @rprasad · Apr 6  
Now you can use Google Maps, Search and Google Assistant to find out food shelters and night shelters near you and help a needy person. This has been developed by @GoogleIndia in collaboration with @mygovindia

#IndiaFightsCorona #21daysLockdown

# Working with local NGOs and researchers to address India's most pressing problems using our technology

## Improving Education

Google partnered with Maharashtra Education Board to train 1500 govt school teachers on Google Earth. Google empowers NGOs like India Literacy Project to create and share **interactive content** on Google Earth mapped to govt curriculum of 4 states (AP, KA, TN, TL).



Learn more at [earth.google.com/outreach](https://earth.google.com/outreach)

## Agriculture and Energy

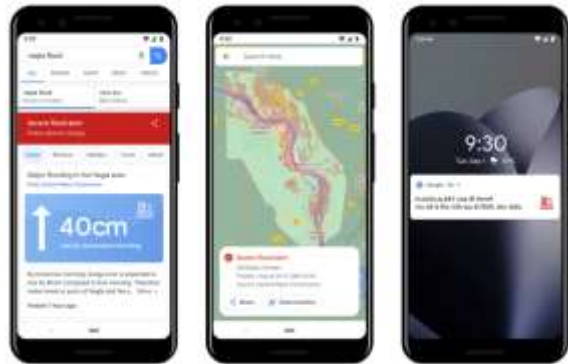
IWMI used Google Earth Engine to develop AgRISE, a mobile app that combines satellite and climate data with field data to assist delivery of crop health cards in support of Prime Minister Fasal Bima Yojana agricultural insurance scheme for farmers.



### Other initiatives:

- CSTEP uses Google Maps Platform API to create CREST, a **Solar Rooftop Potential** Evaluation tool helping Bangalore DISCOM deploy solar panels in the city
- ATREE uses Google Earth and Earth Engine to monitor **water management** practices for River Cauvery in a project funded by Ministry of Earth Sciences.
- And more!

## Flood Forecasting



In partnership with Central Water Commission, scaled flood forecasting to the entire country.

- Help protect more than 200M people across more than 250K sq km
- Sent out ~3M notifications to people in flood-affected areas
- Alerts sent in 9 Indian languages
- 65% of people who receive flood warnings take action to protect themselves or their assets

# Plus Codes have been adopted across various use cases in India

## Household addressing

Addressing of households e.g. pilot in Telangana in partnership with CDMA, projects in Kolkata in partnership with NGO Addressing the Unaddressed (ATU), and in Maharashtra in partnership with NGO Shelter Associates.



## Business/ PoI addressing

Addressing of dealer locations of Ford, post office in Bangalore



## Emergency Services

Use by Kolkata Police for emergency services during Cyclone Yaas



**Kolkata Police** @KolkataPolice · May 25  
Plus Code is open source tool of Google Map. During emergency, these codes can be sent to our Helpline numbers. Police will reach you with the help of these codes.  
[#CycloneYaas](#)  
[#WeCareWeDare](#)

# Launching Streetview in collaboration with Indian geospatial leaders



# Street View

In collaboration  
with

**GENESYS**

**Tech  
Mahindra**

Hampi

Google

See inside - Jul 2015



Eleph  
Ornate  
eleph

Google



Street View <sup>AP</sup>  
|

Partnering with local entities in India has been core to the process, and we plan to invest even more going forward





**The future is geospatial**  
**#geospatialbydefault**



**Thank You**